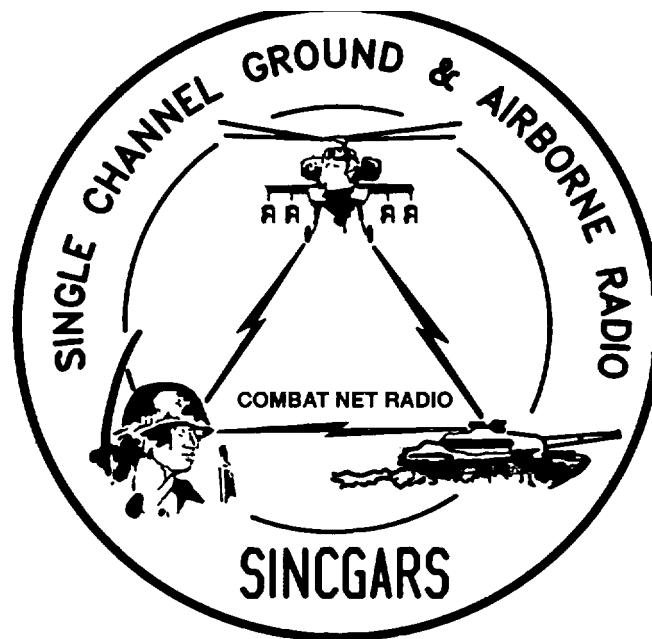


TECHNICAL BULLETIN



INSTALLATION INSTRUCTIONS FOR  
INSTALLATION KIT,  
ELECTRONIC EQUIPMENT, MK-2389/VRC  
(NSN 5895-01-299-5869) (EIC: N/A)  
TO PERMIT INSTALLATION OF RADIO SET  
AN/VRC-87188190 SERIES  
INTO  
CARRIER, COMMAND POST, LIGHT TRACKED,  
M577 VSC3

Approved for public release; distribution is unlimited.  
HEADQUARTERS, DEPARTMENT OF THE ARMY  
1 SEPTEMBER 1993

HEADQUARTERS,  
DEPARTMENT OF THE ARMY  
WASHINGTON, DC 1 SEPTEMBER 1993

TECHNICAL BULLETIN  
NO. 115820-890-20-66

INSTALLATION INSTRUCTIONS FOR  
INSTALLATION KIT,  
ELECTRONIC EQUIPMENT, MK-2389/VRC  
(NSN 5895-01-299-869) (EIC: N/A)  
TO PERMIT INSTALLATION OF RADIO SET  
ANNRC-87/88190 SERIES  
INTO  
CARRIER, COMMAND POST, LIGHT TRACKED, M577 VSC3

**REPORTING OF ERRORS AND RECOMMENDING IMPROVEMENTS**

You can help improve this manual. If you find any mistakes or if you know of a way to improve the procedures, please let us know. Mail your letter, DA Form 2028 (Recommended Changes to Publications and Blank Forms), or DA Form 2028-2 located in the back of this manual direct to: Commander, US Army Communications-Electronics Command and Fort Monmouth, ATTN: AMSEL-LC-LM-LT, Fort Monmouth, New Jersey 07703-5007.

In either case, a reply will be furnished direct to you.

**TABLE OF CONTENTS**

Subject	Section	Page
Scope .....	0.1	1
General Information.....	0.2	1
Maintenance Forms, Records and Reports .....	0.3	1
Reports of Maintenance and Unsatisfactory Equipment .....	0.3.1	1
Report of Packing and Handling Deficiencies .....	0.3.2	1
Discrepancy in Transportation Deficiency Report (TDR) (SF 361) .....	0.3.3	1
Consolidated Index of Army Publications .....	0.4	1
Purpose of Installation.....	1.	2
End Item or System to be Modified .....	2.	2
Application Times .....	3.	2
Time for Completion of Installation .....	3.1	2
Time for Installation of One Assembly or Component.....	3.2	2
Preparation for Installation.....	4.	2
Preparation of Vehicle .....	4.1	2
Preparation of MK.....	4.2	2
MK, Distribution and Consumables .....	4.3	3
Required .....	4.4	7
Tools and Test, Measurement and Diagnostic Equipment (TMDE)		
Installation Procedures .....	5.	8
Installation of Antenna AS-3900NRC (antenna).....	5.1	10
Installation of Antenna Base.....	5.1.1	10
Installation of Top Antenna Assembly .....	5.1.2	11
Installation of OE-254 Antenna Adapter .....	5.2	12
(mounting base) .....	5.3	13
Installation of Mounting Base, Electrical Equipment MT-6352NRC		
Installation of Cables .....	5.4	15
Installation of Loudspeaker, Permanent Magnet LS-454AU (speaker).....	5.5	17
Installation of MK-2499NRC .....	5.6	18
Post-Installation and Checkout.....	5.7	18
Appendix A. References.....		A-1

LIST OF ILLUSTRATIONS

Figure	Title	Page
4-1	MK Illustrated Parts List .....	5
4-2	TSEC/KY-57 Illustrated Parts List .....	6
5-1	MK and Radio Installation.....	8
5-2	Antenna Base Installation.....	10
5-3	Top Antenna Assembly Installation.....	11
5-4	OE-254 Antenna Adapter Installation.....	12
5-5	Mounting Base Installation .....	13
5-6	Cable Installation.....	15
5-7	Speaker Installation.....	17
5-8	Cable Diagram .....	19

LIST OF TABLES

Number	Title	Page
4-1	MK Parts List for Installation of Radio Set <i>ANNRC-87/88/90</i> Series.....	4
4-2	Additional Items Required for Installation When Using RT-1439NRC .....	6

**0.1 SCOPE.**

This technical bulletin provides Installation Instructions for Installation Kit, Electronic Equipment, MK-2389NRC, commonly referred to as the Mounting Kit (MK). The MK shall be installed into the following type of vehicle(s):

- Carrier, Command Post, Light Tracked, M577 VSC-3

The MK is used for installation of radio set components at field locations. The information contained in this technical bulletin is the official authorization to perform the installation at the unit maintenance level.

**NOTES**

- This technical bulletin is not an authorization for requisition or turn-in of vehicles.
- This technical bulletin does not establish quantity or types of vehicles assigned to using units.

This technical bulletin does not contain information on the maintenance or replacement of the MKs. This information is contained in the MAC of TM 11-5820-890-202, TM 11-5820-890-20-4 and RPSTL of TM 11-5820-890-20P.

**0.2 GENERAL INFORMATION.**

The MK becomes operable when all the radio set components are installed in the vehicle and correct power is supplied. Refer to TM 11-5820-890-201 or TM 11-5820-890-20-4 for installation, Operational (OP) Check instructions, and required maintenance procedures. Refer to TM 11-5820-890-20P for repair parts.

Included in the Radio Set ANNRC-87/88/90 Series are:

Radio Set *ANNRC-87/88/90* (for RT-1439NRC)

Radio Set *ANNRC-87A/88A90A* (for RT-1523(C)/U)

**0.3 MAINTENANCE FORMS, RECORDS AND REPORTS.**

**0.3.1 Reports of Maintenance and Unsatisfactory Equipment.** See section 4.2.2.3 for information.

**0.3.2 Report of Packaging and Handling Deficiencies.** See section 4.2.2.1 for information.

**0.3.3 Discrepancy in Transportation Deficiency Report (TDR) (SF361).** See section 4.2.2.2 for information.

**0.4 CONSOLIDATED INDEX OF ARMY PUBLICATIONS.**

Refer to the latest issue of DA Pam 25-30 to determine whether there are new changes, or additional publications pertaining to the equipment.

**1. PURPOSE OF INSTALLATION.**

The Installation Kit, Electronic Equipment, MK-2389/VRC (MK) contains the items needed to mount Radio Set AN/VRC-87A/88A/90A in a Carrier, Command Post, Light Tracked, M577 VSC-3 (vehicle). If Radio Set AN/VRC-87/88/90 is to be installed, communications security equipment (TSEC/KY-57) will need to be installed also. See section 5.6 for information.

**2. END ITEM OR SYSTEM TO BE MODIFIED.**

Not applicable.

**3. APPLICATION TIMES.**

**3.1 Time for Completion of Installation.** Using two people, a total of 3.5 work hours is required. Typical vehicle downtime is 3.5 hours.

**3.2 Time for Installation of One Assembly or Component.** The following table lists the time required to install one component. All times have been rounded off to the nearest half hour. The sum of these times will not reflect the typical vehicle downtime.

ITEM	SECTION	TIME
Antenna AS-3900/VRC	5.1	1.0
Mounting Base, Electrical Equipment MT-6352/VRC	5.3	0.5
Cables	5.4	1.0

**4. PREPARATION FOR INSTALLATION.**

This section explains how to prepare the vehicle and MK for installation.

**4.1 Preparation of Vehicle.** To prepare the vehicle for installation, insure that the site includes adequate lighting and a power source when drilling is required. Inspect the vehicle for damage that could affect installation. Have any such damage repaired before installing MK.

**4.1.1 Items to be Removed.** Remove existing AN/VRC-12 radio family installation kit/harness. See TM 11-5820-401-20-2 for removing items used with intercom systems, or TM 11-5820-401-20-1 (used without intercom systems), and TM 9-2350-261-20.

**4.1.2 List of Items to be Retained.** Not applicable.

**4.2 Preparation of MK.** To prepare MK, unpack, inspect and check inventory.

**4.2.1 Precautions During Handling.** Observe these steps to prevent equipment damage.

- a. Keep dust covers in place on connectors.
- b. Do not disassemble or modify parts in MK unless authorized to do so.
- c. Keep mounting hardware covered and protected until needed.
- d. When exposed to moisture, rain or salt water, keep all parts dry to prevent corrosion.

#### **4.2.2 Unpack and Inspect Equipment.**

**4.2.2.1 Inspect Packaging for Evidence of Damage.** Any shipping damage should be reported on SF364 Report of Discrepancy (ROD) as prescribed in AR 735-11-2/DLAR 4140.55/NAVMATINST 4355.73A/AFR 400-64/MCO 4430.3F.

**4.2.2.2 Unpack and Inventory MK.** If any item is missing, fill out and forward Transportation Deficiency Report (TDR) (SF361) as described in AR 55-38/NAVSUPINST 4610.33C/AFR 75-18/MCO P4610.19D/DLAR 4500.15.

**4.2.2.3 Examine Each Item for Damage.** If any item is damaged, fill out and forward SF364 Report of Discrepancy (ROD) as prescribed in AR 735-11-2/DLAR 4140.55/NAVMATINST 4355.73A/AFR 400-64/MCO 4430.3F. All damages should be reported as prescribed by DA Pam 738-750, as contained in Maintenance Management Update.

#### **4.3 MK, Distribution, and Consumables.**

**4.3.1 Items Supplied in MK and/or Required for Installation.** Use Table 4-1 and figure 4-1 to identify and inventory MK parts supplied to install Radio Set AN/VRC-87/88/90 Series. Refer to Table 4-2 and figure 4-2 to identify additional items required to install when using RT-1439/VRC.

#### **4.3.2 Distribution and Issue Instructions.**

- a. US Forces: Do not requisition MK. They will be shipped automatically.
- b. US Army Depots: Requisition MK through supply channels.
- c. Multiservice: Instructions shall be included or multiservice modifications.
- d. MAP/MAS Countries: Instructions shall be provided for MAP/MAS countries.

Table 4-1. MK Parts List for Installation of Radio Set ANIVRC-87/88190 Series

NSN	ITEM DESCRIPTION AND PART NUMBER	QUANTITY IN MK	SMR CODE	FIGURE ITEM NO.
5985-01-297-2971	Antenna AS-3900/VRC (A3017899-1)	1	PAOFA	4-1, 2
5305-00-847-1159	Screw, Cap, Hexagon (3/8-16 x 1 3/4 in) MS3507-365	4	PAOZZA	
5310-00-913-8881	Nut, Hexagon (3/8-16 in) MS51971-3 (Not Used)	4	PAOZZA	
5310-00-061-1258	Washer, Lock, Internal/External-Toothed (3/8 in) MS45904-76 (4 Not used)	8	PAOZZA	
5310-00-889-2527	Washer, Lock, Internal/External-Toothed (5/16 in) MS45904-72	2	PAOZZA	
5306-00-225-9086	Bolt, Machine (5/16-24 x 5/8 in) MS90726-31 (Not Used)	1	PAOZZA	
5330-01-205-2864	Gasket (A3013655-1)	1	PAOZZA	
5985-01-226-8171	Adapter, Antenna - OE-254 (A3014066-1)	1	PAOZZA	4-1, 4
5965-00-876-2375	Loudspeaker, Permanent Magnet LS-454/U	1	PAOZZA	4-1, 5
5975-01-188-8873	Mounting Base, Electrical Equipment MT-6352/VRC (A3013367-1)	1	PAOFFA	4-1, 1
5306-00-225-9089	Bolt, Machine (5/16-24 x 1 in) MS90726-34	5	PAOZZA	
5310-00-889-2527	Washer, Lock, Internal/External-Toothed (5/16 in) MS45904-72	10	PAOZZA	
5310-00-880-7746	Nut, Hexagon (5/16 - 24 in) MS51968-5	5	PAOZZA	
5995-01-219-1847	Cable Assembly, Power, Electrical CX-13306/VRC (3 FT, 0 IN) (A3014043-2)	1	PAOZZA	4-1, 9
5995-01-303-4951	Cable Assembly, Special Purpose, Electrical CX-13313/VRC (2 FT, 7 IN) (A3018360-1)	1	PAOZZA	4-1, 7
5995-01-225-0506	Cable Assembly, Special Purpose, Electrical CX-13300/VRC (8 FT, 0 IN) (A3014044-8)	1	PAOZZA	4-1, 6
5995-01-219-7024	Cable Assembly, Radio Frequency CG-3856/VRC (4 FT, 0 IN) (A3014032-2)	2	PAOZZA	4-1, 8
5306-00-225-8496	Bolt, Machine (5/16-18 x 5/8 in) MS90725-31	3	PAOZZA	
5965-00-043-3463	Handset H-250/U	1	PAOZZA	4-1, 3
5340-00-067-3868	Clamp, Loop (1/4-5/16 in) MS21333-109	2	PAOZZA	
5340-00-088-1254	Clamp, Loop (5/8-1/4 in) MS21333-104	3	PAOZZA	PAOZZA
5340-00-764-7052	Clamp, Loop (1 3/16-5/16 in) MS21333-116	3	PAOZZA	
4020-01-341-8795	Fiber Rope Assembly - Single Leg (A3167672-1)	1	PAOZZA	4-1, 10
5305-00-191-3640	Screw, Tapping, Hex-Head (1/4-20 x 5/8 in) MS51851-85	4	PAOZZA	
5975-00-111-3208	Strap, Tiedown, Electrical Components	10	PAOZZA	
5310-00-582-5965	Washer, Lock (1/4 in) MS35338-44	4	PAOZZA	
5310-00-407-9566	Washer, Lock (5/16 in) MS35338-45	2	PAOZZA	

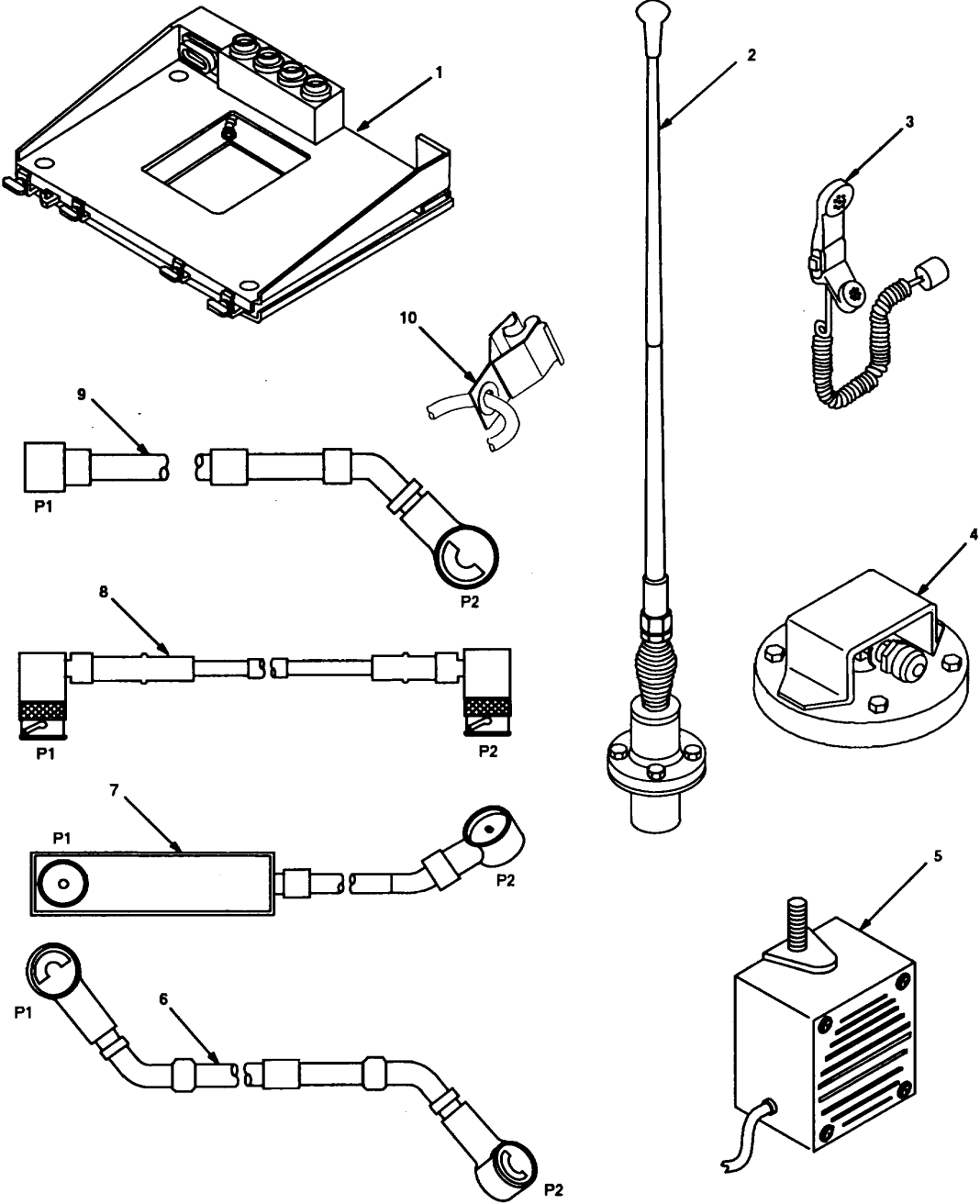


Figure 4-1. MK Illustrated Parts list



Table 4-2. Additional Items Required for Installation When Using RT-14391VRC

NSN	ITEM DESCRIPTION AND PART NUMBER	QUANTITY IN MK	SMR CODE	FIGURE ITEM NO.
5995-01-222-4210	Cable Assembly, Special Purpose, Electrical CX-13293/VRC (4 FT, 0 IN) (A3014034-1)	1	PAOZZA	4-2, 1
5995-01-226-5482	Cable Assembly, Power, Electrical CX-13303/VRC (2 FT, 6 IN) (A3014040-5)	1	PAOZZA	4-2, 2

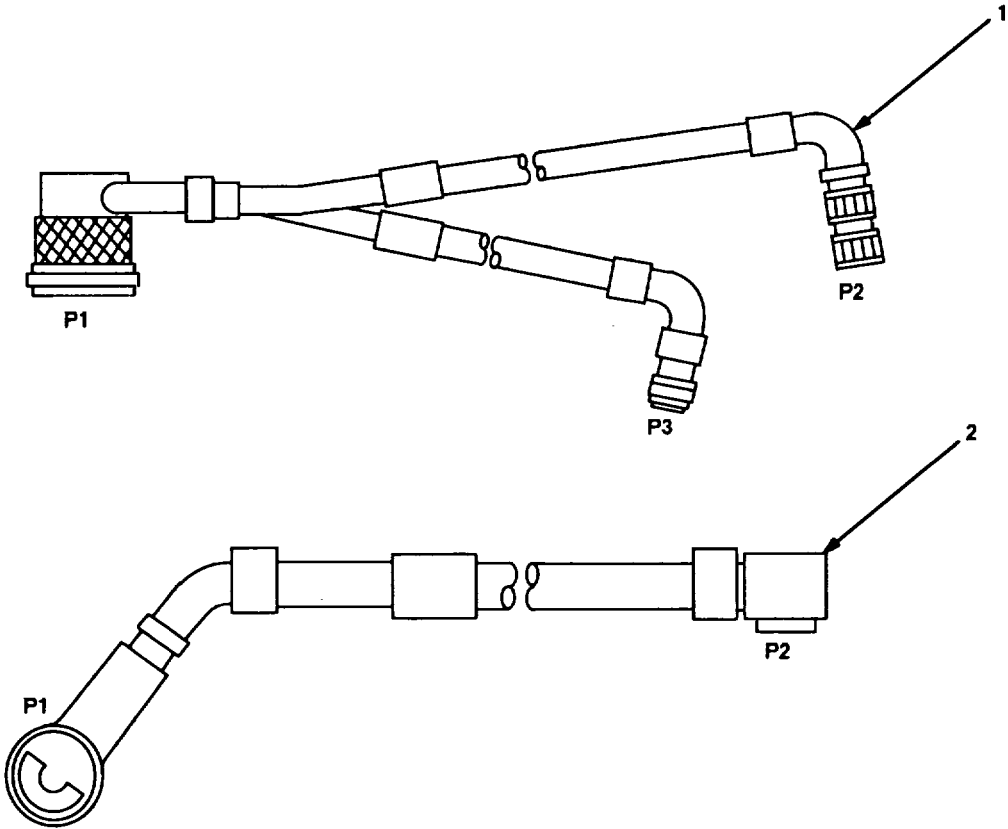


Figure 4-2. TSEC/KY-57 Illustrated Part List

**4.3.3 Consumable Materials.** The table below lists materials required for installation but not supplied with MK.

NSN	NOMENCLATURE
8040-00-117-8510	Adhesive-Sealant, Clear, RTV
6850-00-880-7616	Silicone Compound, MIL-S-8660

**4.4 Tools and Test, Measurement and Diagnostic Equipment (TMDE) Required.** The following tools and TMDE are needed for installation.

NOMENCLATURE	NSN	QUANTITY
Radio Set*		1
Pocket Knife, Electrician's	5110-00-240-5943	1
Screwdriver, No. 2 Point Phillips, 4 in	5120-00-234-8913	1
Screwdriver, 1/4 in Flatblade, 4 in	5120-00-222-8852	1
Pliers, Round Nose	5120-00-240-6172	1
Pliers, Diagonal Cutting	5110-00-965-0974	1
Wrench, Open/Box: 3/8 in	5120-00-228-9504	1
1/2 in	5120-00-228-9506	1
9/16 in	5120-00-228-9507	1
Handle, Socket Wrench	5120-00-240-5364	1
Socket:3/8 in	5120-00-227-6702	1
1/2 in	5120-00-237-0977	1
9/16 in	5120-00-227-6704	1
Electric Drill	5130-00-889-8994	1
Drill Bits: 5/16 in	5133-00-227-9662	1
13/32 in	5133-00-227-9668	1
11/32 in	5133-00-227-9664	1

\* Use radio issued with your vehicle if available.

**5. INSTALLATION PROCEDURES.**

This section describes where and how to install MK items in the vehicle. See figure 5-1 for an overall view of where vehicular MK equipment, as well as radio components, typically will be installed. When installing MK equipment, be sure to read and follow instructions and illustrations carefully. If Radio Set AN/VRC-87/88/90 is to be installed, communications security equipment (TSEC/KY-57) will need to be installed also. See section 5.6 for information.

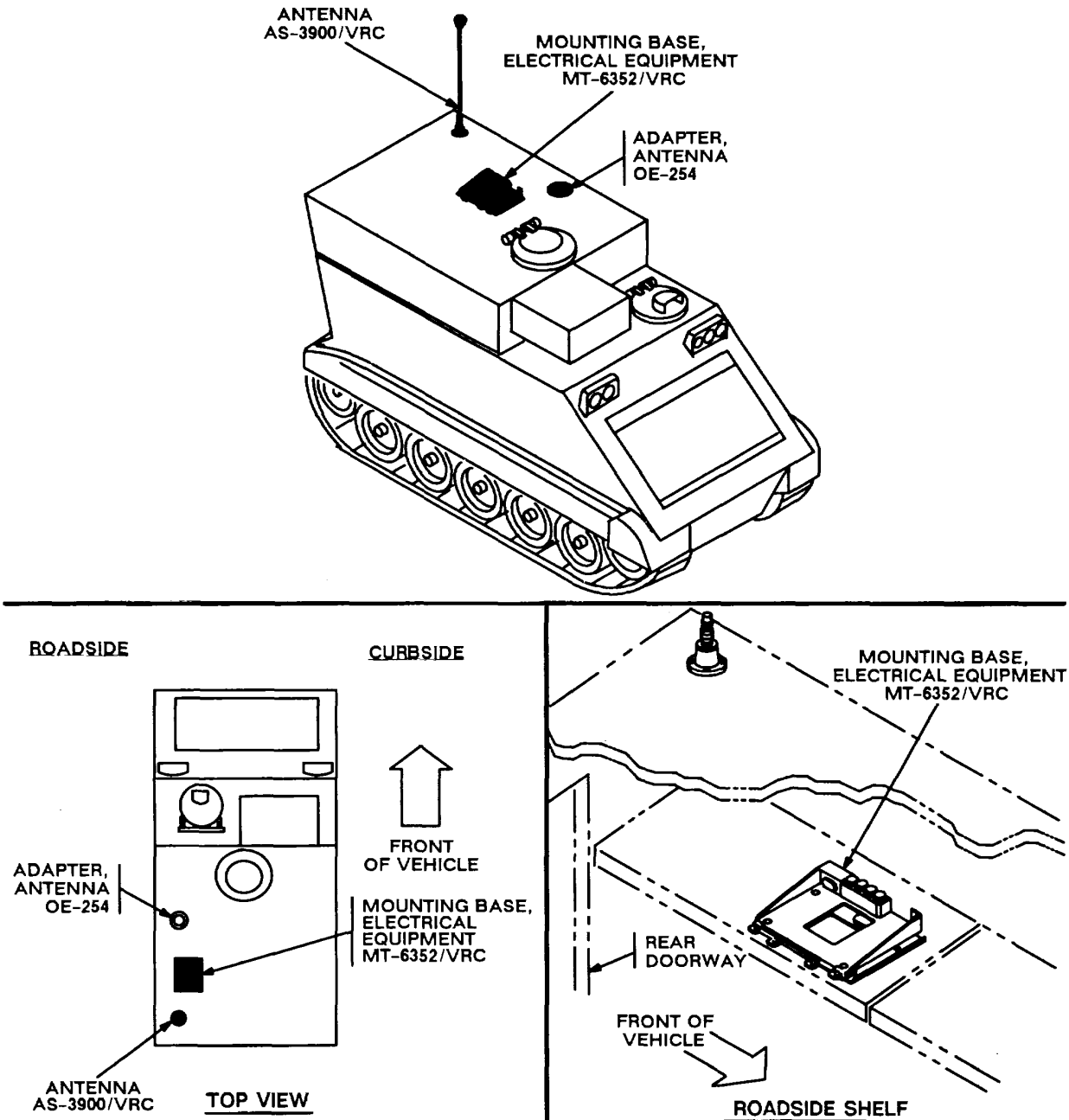
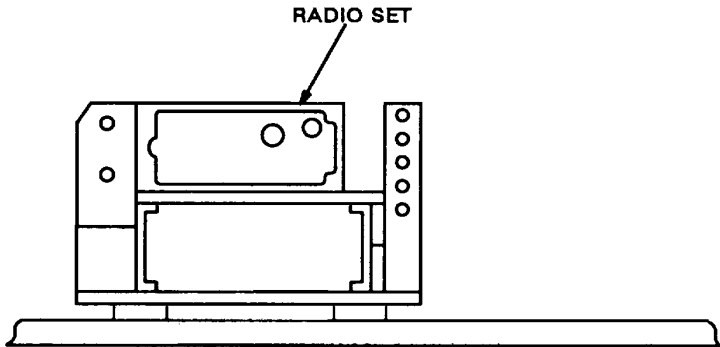


Figure 5-1 (1). MK and Radio Installation: MK Equipment Locations

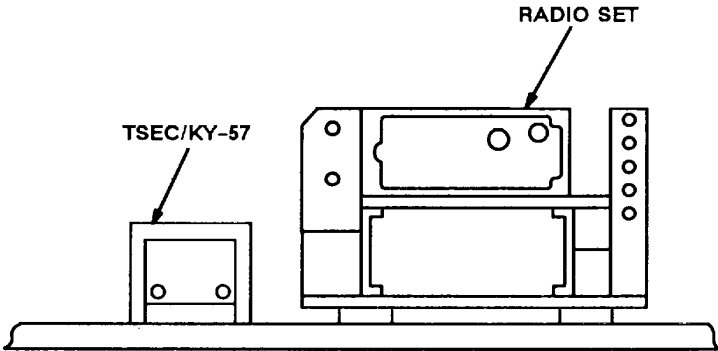
INSTALLATION  
FOR  
AN/VRC-87A/88A/90A



ROADSIDE SHELF

---

INSTALLATION  
FOR  
AN/VRC-87/88/90



ROADSIDE SHELF

Figure 5-1 (2). MK and Radio Installation: MK Equipment Locations

**5.1 Installation of Antenna AS-3900/VRC (antenna).** See figure 5-1 (1) for locations.

**5.1.1 Installation of Antenna Base.**

ITEM	ACTION	REMARKS
<b>NOTE</b>		
Apply a thin coat of adhesive-sealant to both sides of each internal/external-toothed (IET) washer during installation, and to the area of contact where IET washer is to be placed.		
a. Gasket (4).	Apply a thin coat of silicone compound to both sides; then place on port and align mounting holes. See figure 5-2.	
b. Antenna base (3).	Place on top of gasket (4) and port; then align mounting holes.	
c. Four cap screws (1) and four internal/external-toothed (IET) washers (2).	Install and secure to antenna base (3) and port.	Tools: 9/16 in socket.
d. Ground strap (5), cap screw (6) and two IET washers (7).	Install and secure to existing boss on roadside ceiling.	Tools: 1/2 in socket.

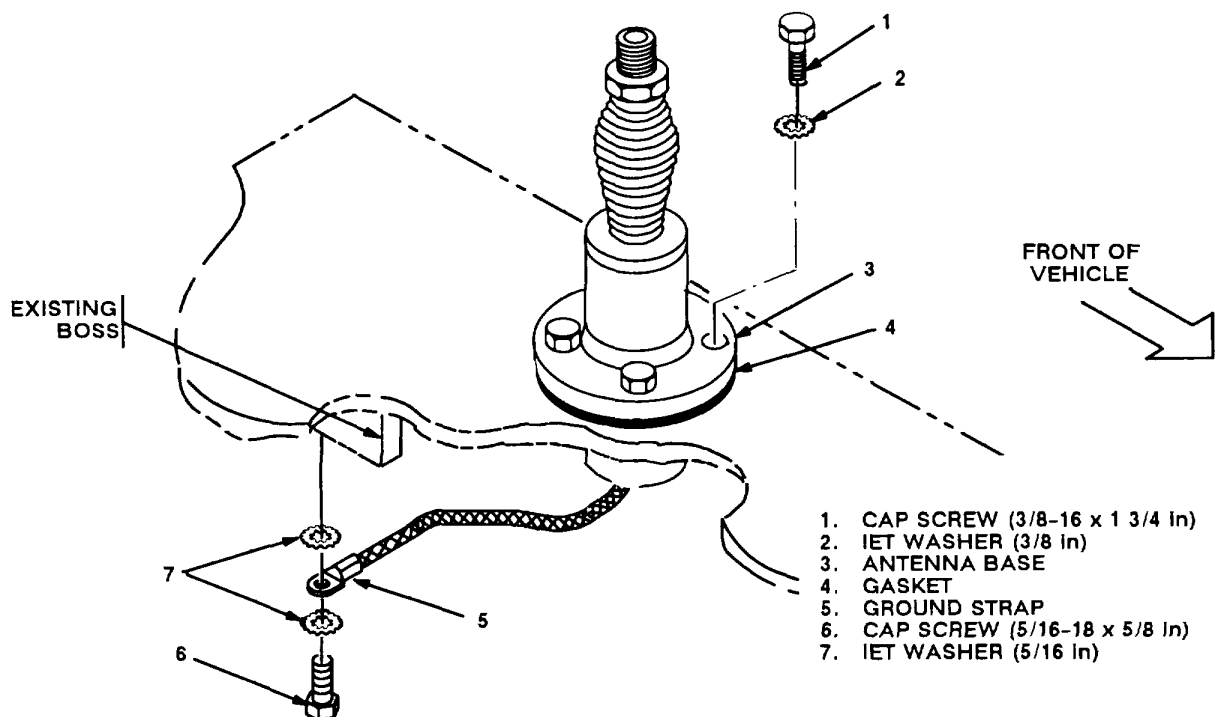
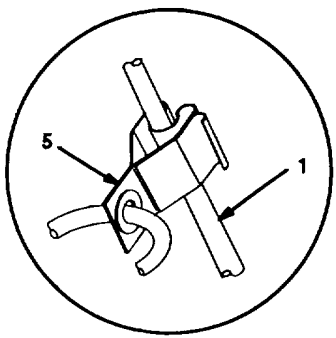


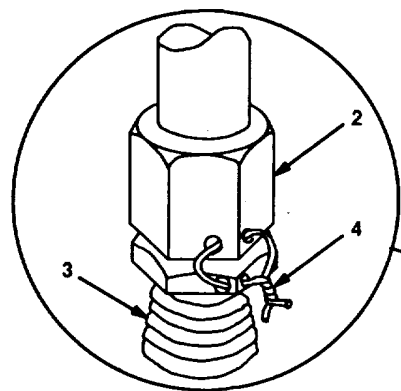
Figure 5-2. Antenna Base Installation: Rear Roadside Antenna Port

**5.1.2 Installation of Top Antenna Assembly.** The top portion of the antenna includes a lower element and an upper element (with installed cap). Use the following procedure to assemble, install and tie down all antennas.

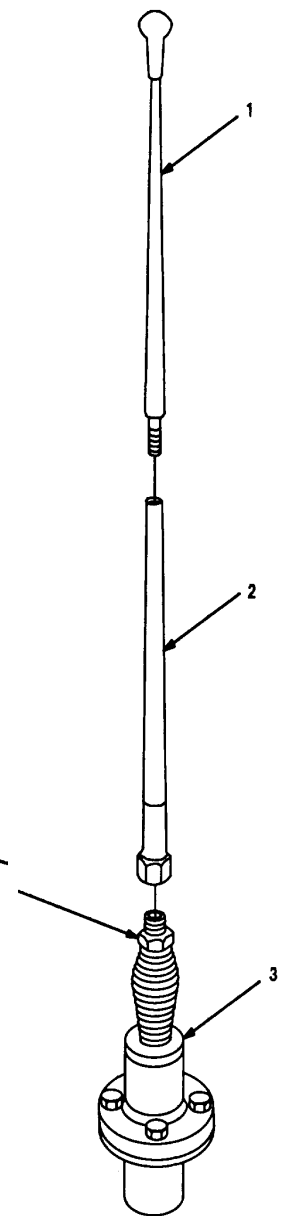
ITEM	ACTION	REMARKS
a. Antenna elements (1, 2).	Apply silicone compound to element threads and assemble. See figure 5-3.	
b. Antenna element (2).	Install and hand-tighten to antenna base (3).	
c. lock wire (4).	Install to antenna element (2) AND antenna base (3). See figure 5-3, detail A.  Cut and remove excess wire with diagonal cutting pliers.	
d. Fiber rope assembly (5).	Attach clip to antenna element (1). Tie rope to vehicle to position antenna in desired location. See figure 5-3, detail B.	



**DETAIL B**



**DETAIL A**



*Figure 5-3. Top Antenna Assembly Installation*

- 1. ANTENNA ELEMENT (UPPER)
- 2. ANTENNA ELEMENT (LOWER)
- 3. ANTENNA BASE
- 4. LOCK WIRE
- 5. FIBER ROPE ASSEMBLY

## 5.2 Installation of OE-254 Antenna Adapter. See figure 5-1 (1) for location.

ITEM	ACTION	REMARKS
a. Existing port cover and gasket.	Remove and discard from middle road-side antenna port.	Port cover and gasket not shown.
b. Gasket (5).	Apply a thin coat of silicone compound to both sides. Place on port and aline mounting holes. See figure 5-4.	
c. OE-254 antenna adapter (4).	Place on top of gasket (5) and port; then aline holes with mounting holes.	
d. Four cap screws (1), four lock washers (2) and four flat washers (3).	Install and secure to antenna port.	Tools: 9/16 in socket.

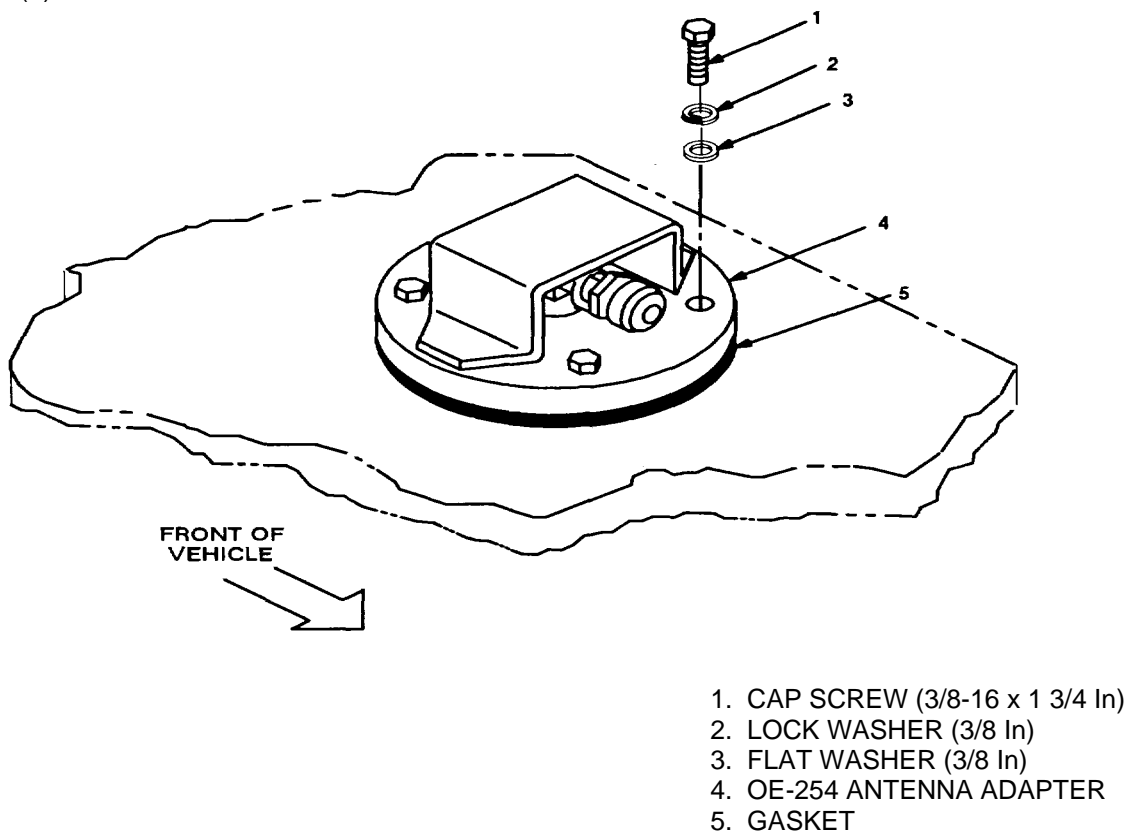


Figure 5-4. OE-254 Antenna Adapter Installation: Middle Roadside Port

**5.3 Installation of Mounting Base, Electrical Equipment MT-63521VRC (mounting base).** Remove and retain attaching bag of 5/16 in mounting hardware for installation. To insure good electrical grounding, any rust, corrosion or paint around mounting holes in radio shelf should be removed before installing the mounting base. See figure 5-5 and perform the following steps.

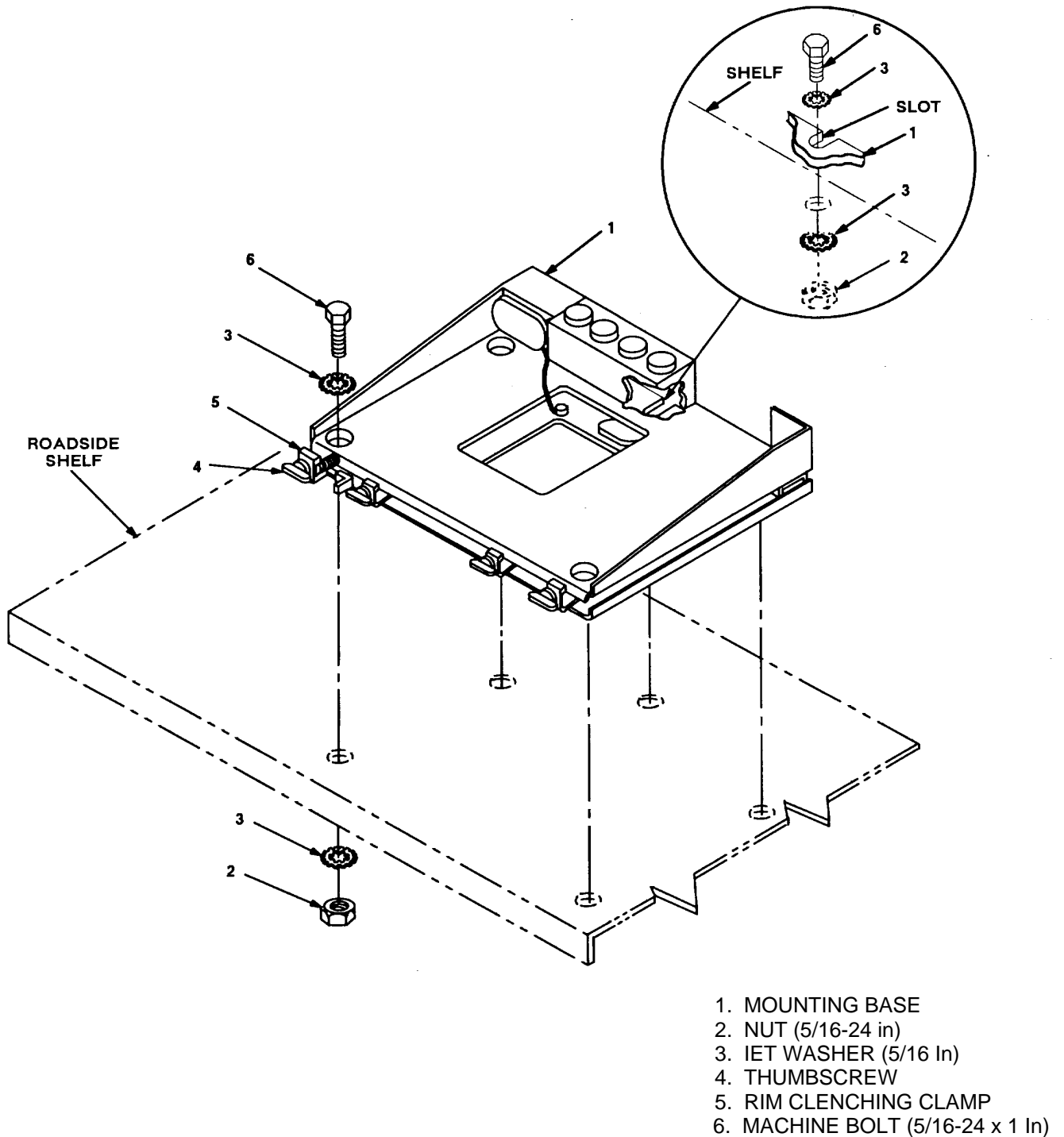


Figure 5-5. Mounting Base Installation: Roadside Shelf 13



**5.3 Installation of Mounting Base, Electrical Equipment MT-6352/VRC (mounting base).** Continued

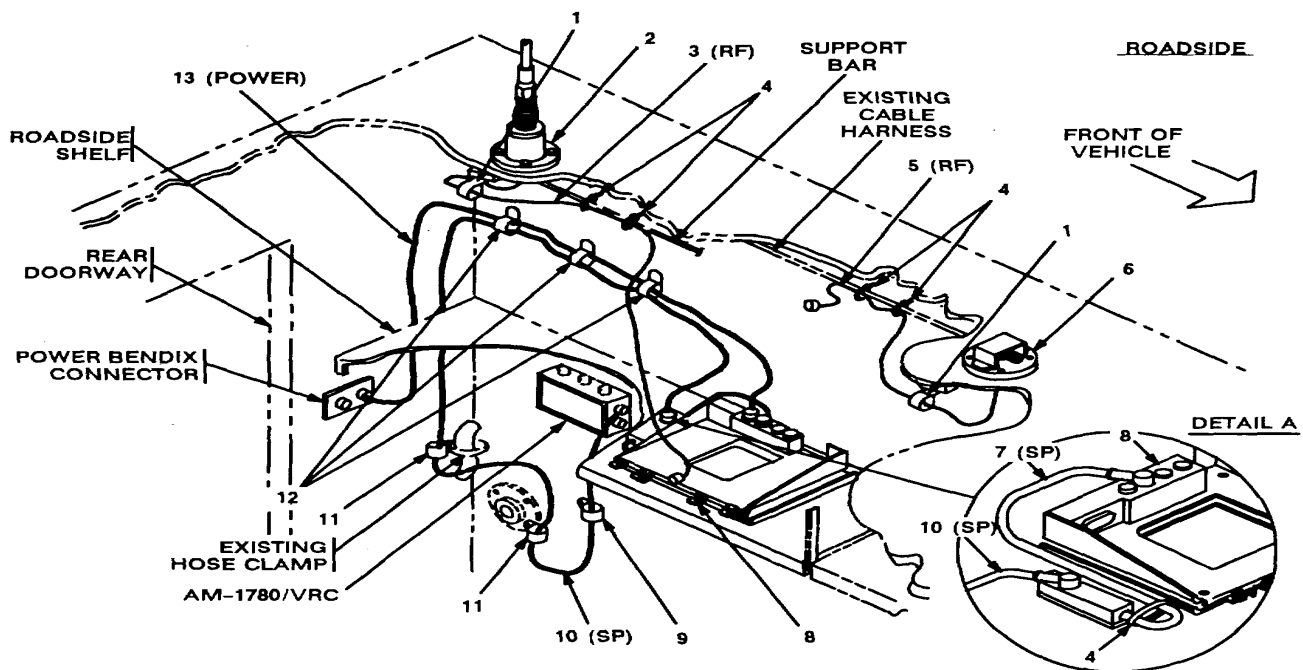
ITEM	ACTION	REMARKS
<b>NOTE</b>		
Apply a thin coat of adhesive-sealant to both sides of each internal/external-toothed (IET) washer during installation, and to the area of contact where IET washer is to be placed.		
a. Mounting base (1).	Place on roadside shelf. See figure 5-5.	
b. Two outer thumbscrews (4).	Turn ccw until both sets of threads have cleared center of holes.	
c. Mounting base (1).	Aline four holes and rear slot with matching hole pattern in shelf.	
d. Five machine bolts (6), ten IET washers (3) and five nuts (2).	Install and secure to mounting base (1) and shelf.	Tools: 1/2 in socket and 1/2 in open/box wrench.
e. Two outer thumbscrews (4).	Tighen and secure to rim clenching clamps (5) and mounting base (1).	

**5.4 Installation of Cables.** To accomplish the installation, leave loop clamps and tiedown straps loose enough to adjust cable slack and allow easy adjustment of equipment. When installation is complete, tighten and secure clamps and tiedown straps.

**WARNING**

Make sure vehicle power source is positioned OFF or disconnected before installing cables.

ITEM	ACTION	REMARKS
a. RF cable (3) connector P1.	Connect and secure to antenna base (2) connector J1. See figure 5-6.	
b. Loop clamp (1), machine bolt (5/16-18 x 5/8 in) and lock washer (5/16 in).	Wrap clamp around RF cable (3); then install to existing boss on ceiling. See figure 5-6 for location(s).	Tools: 1/2 in socket.



- |  |   |
|--|---|
| <p>1. LOOP CLAMP (1/4 x 5/16 in)<br/>MACHINE BOLT (5/16-18 x 5/8 in)<br/>LOCK WASHER (5/16 in)</p> <p>2. ANTENNA BASE</p> <p>3. RF CABLE, CG-3856/VRC (4 FT, 0 IN)</p> <p>4. TIEDOWN STRAP</p> <p>5. RF CABLE, CG-3856/VRC (4 FT, 0 IN)</p> <p>6. OE-254 ANTENNA ADAPTER</p> <p>7. SP CABLE, CX-13313/VRC (2 FT, 7 IN)</p> <p>8. MOUNTING BASE</p> | <p>9. LOOP CLAMP (5/8-1/4 In)<br/>TAPPING SCREW (1/4-20 x 5/8 in)<br/>LOCK WASHER (1/4 In)</p> <p>10. SP CABLE, CX-13300/VRC (8 FT, 0 IN)</p> <p>11. LOOP CLAMP (518-114 In)</p> <p>12. LOOP CLAMP (1 3116-5/16 in)<br/>TAPPING SCREW (11/4-20 x 5/8 In)<br/>LOCK WASHER (1/4 In)</p> <p>13. POWER CABLE, CX-13306/VRC (3 FT, 0 IN)</p> |
|--|---|

Figure 5-6. Cable Installation: Rear Roadside Interior 15

## 5.4 Installation of Cables. Continued

ITEM	ACTION	REMARKS
c. RF cable (3) connector P2.	Position on top of mounting base (8). See figure 5-6.	
d. Two tiedown straps (4).	Wrap around RF cable (3), then install loosely to support bar. See figure 5-6 for location(s).	
e. RF cable (5) connector P1.	Connect and secure to OE-254 antenna adapter (6). See figure 5-6.	
f. Loop clamp (1), machine bolt (5/16-18 x 5/8 in) and lock washer (5/16 in).	Wrap clamp around RF cable (5); then install to existing boss on ceiling. See figure 5-6 for location(s).	Tools: 1/2 in socket.
g. RF cable (5) connector P2.	Stow on existing cable harness with two tiedown straps (4).	
h. SP cable (7) connector P2.	Connect and secure to mounting base (8) connector J3. See figure 5-6, detail A.	
i. SP cable (10) connector P2.	Connect and secure to SP cable (7) connector P1.	
j. SP cable (7).	Position along left side mounting base (8); then secure with tiedown strap (4).	
k. Power cable (13) connector P2.	Position on top of mounting base (8). See figure 5-6.	
l. Power cable (13) and SP cable (10).	Route along roadside wall and down below rear edge of shelf.	
m. Three loop clamps (12), three hex-head tapping screws (1/4-20 x 5/8 in) and three lock washers (1/4 in).	Wrap clamps around power cable (13) and SP cable (10); then install to existing bosses on roadside wall. See figure 5-6 for location(s).	Tools: 3/8 in socket.
n. Power cable (13) connector P1.	Connect and secure to power Bendix connector. See figure 5-6.	
o. SP cable (10) connector P1.	Connect and secure to AM-1780/VRC connector J501.	
p. Loop clamp (11) and existing mounting hardware.	Wrap clamp around SP cable (10); then install on top of existing hose clamp. See figure 5-6 for location(s).	
q. Loop clamp (11) and existing mounting hardware.	Wrap clamp around SP cable (10); then install.	
r. Loop clamp (9), hex-head tapping screw (1/4-20 x 5/8 in) and lock washer (1/4 in).	Wrap clamp around SP cable (10); then install to existing boss on roadside wall,	Tools: 3/8 in socket.
s. Power cable (13) connector P2.	Connect and secure to mounting base (8) connector J1. See figure 5-6.	

**5.5 Installation of Loudspeaker, Permanent Magnet LS-4541U (speaker).** Mounting location for speaker may be determined by the vehicle commander. Typical methods used for mounting the speaker are as follows:

**Method A.** See figure 5-7 (1).

- a. Determine speaker (3) location.
- b. Drill  $13/32$  in diameter hole through mounting surface.
- c. Insert stud on speaker (3) through drilled hole; then secure with lock washer (2) and wing nut (1).

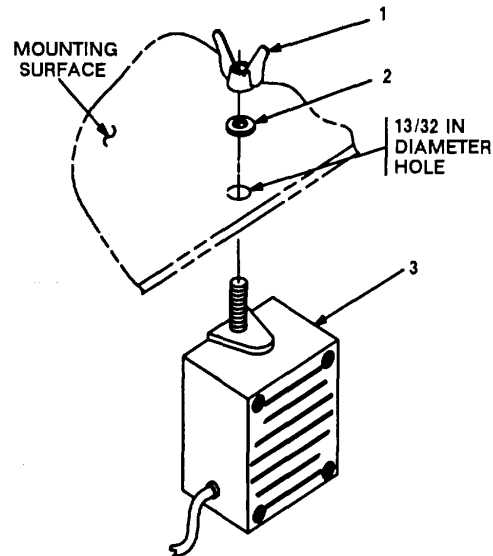


Figure 5-7 (1). Speaker Installation - A

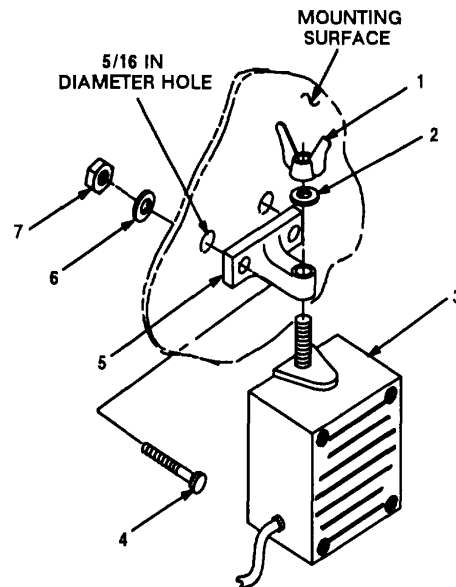
1. WING NUT ( $3/8$ -24 in)
2. LOCK WASHER ( $3/8$  in)
3. SPEAKER
4. CAP SCREW ( $1/4$ -20 x 1 in)
5. SPEAKER BRACKET
6. LOCK WASHER ( $1/4$  in)
7. NUT ( $1/4$ -20 in)

**Method B.** See figure 5-7 (2).

**NOTE**

Items (4), (6) and (7) are not supplied in kit.

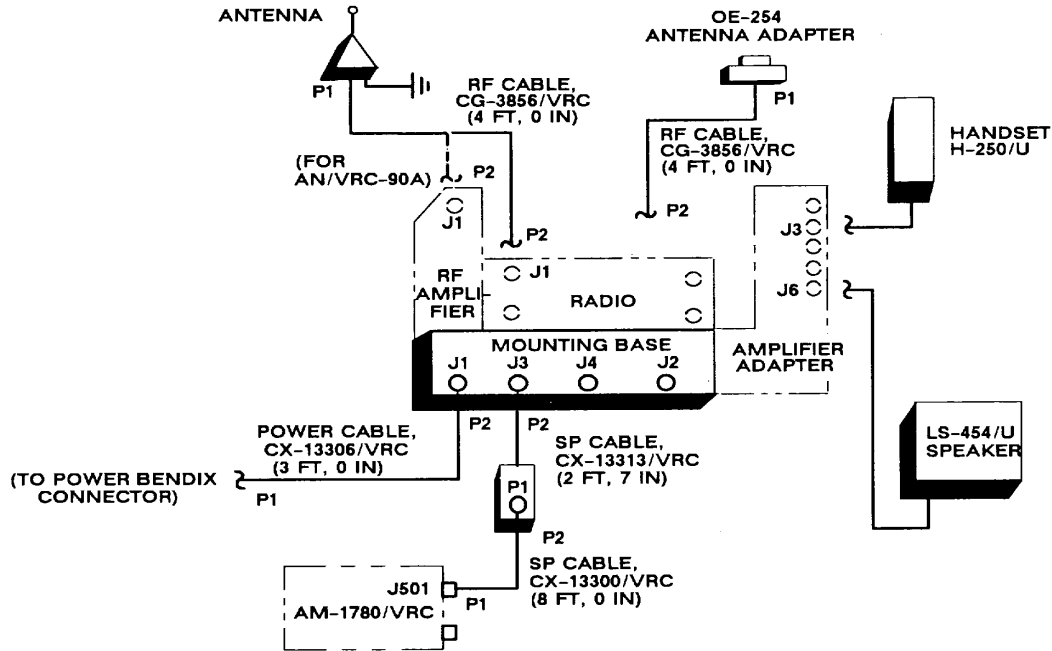
- a. Determine speaker (3) location.
- b. Drill two  $5/16$  in diameter holes through mounting surface.
- c. Install and secure two cap screws (4), two lock washers (6) and two nuts (7) to speaker bracket (5) and mounting surface.
- d. Insert speaker (3) stud through speaker bracket (5) hole; then secure with lock washer (2) and wing nut (1).



**5.6 Installation of MK-2499NRC.** For Radio Set *ANNRC-87/88/90*, install MK-2499NRC (TSEC/KY-57 security equipment) in the location shown in figure 5-1 (2). Use an electric drill and 11/32 in drill bit to drill four holes. Refer to section 5.7 for connection of cables.

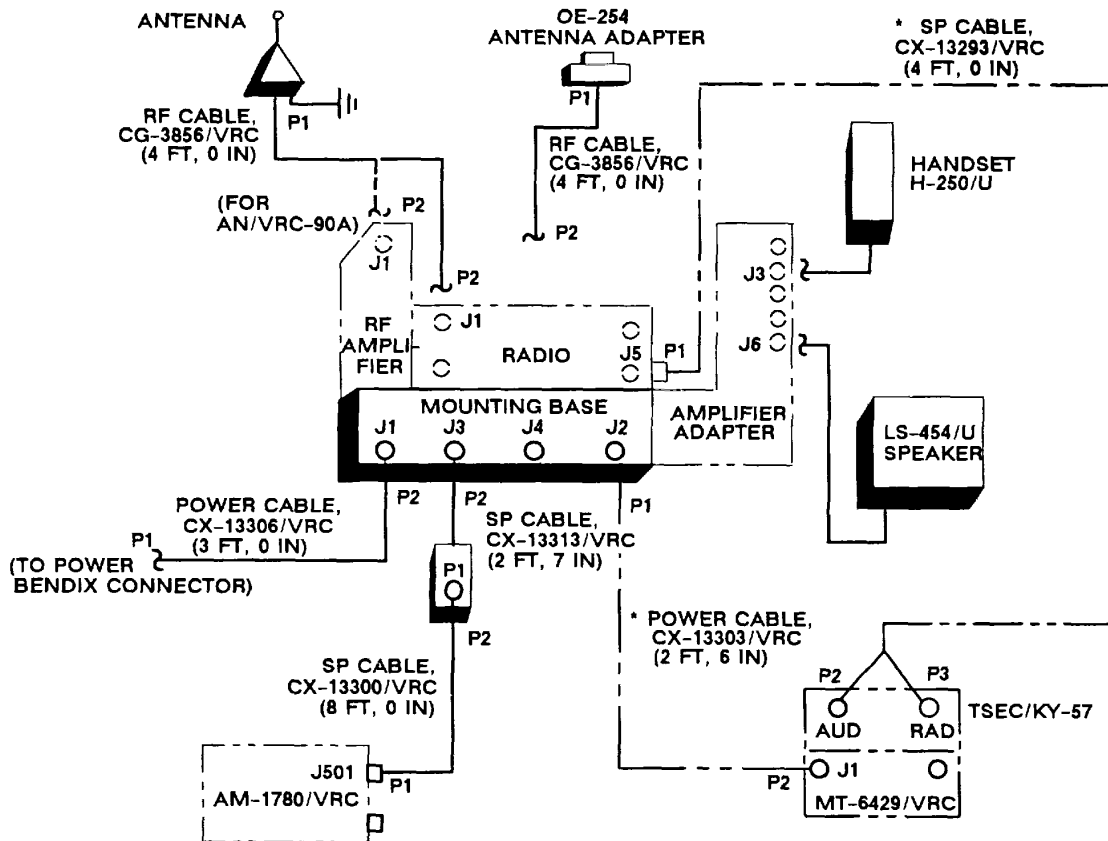
**5.7 Post-Installation and Checkout.** After equipment is installed and cables are connected, perform the following steps.

ITEM	ACTION	REMARKS
a. Equipment.	Check for secure mounting. Check for loose parts, connectors and mounting hardware.	
b. Cables.	Check for proper installation and connection of cables. See figure 5-8 for cable connections. Unused cables should be stowed in appropriate place inside the vehicle.	
c. Loop clamps.	Check that all have been properly installed and tightened.	
d. Protective covers.	Insure that all installed cables are covered when not in use or connected.	
e. Radio issued with vehicle.	Install and connect cables. See TM 11-5820890-21 or TM 11-5820-89020-4 for installation and Operational (OP) Check instructions.	
f. MK line replaceable units.	See TM 11-5820-890-20P for Repair Parts and Special Tools List (RPSTL) information.	



CABLE ASSEMBLY	FROM		TO			
	CABLE CONN.	UNIT	CABLE CONN.	UNIT CONN.	UNIT	UNIT CONN.
CX-13306/VRC (3 FT, 0 IN)	P2	Mounting base	J1	P1	Power Bendix connector	
CX-13313/VRC (2 FT, 7 IN)	P2	Mounting base	J3	P1	CX-13300/VRC (8 FT, 0 IN)	P2
CX-13300/VRC (8 FT, 0 IN)	P2	CX-13313/VRC (2 FT, 7 IN)	P1	P1	AM-1780/VRC	J501
CG-3856/VRC (4 FT, 0 IN)	P1	Antenna base	J1	P2	RF amplifier or radio	J1
CG-3856/VRC (4 FT, 0 IN)	P1	OE-254 antenna adapter	J1	P2	Stowed (on existing cable harness)	
Handset cable		Handset			Amplifier-adapter	J3
Speaker cable		LS-454/U speaker			Amplifier-adapter	J6

Figure 5-8 (1). Cable Diagram: For AN/VRC-87A/88A/90A



\* NOT SUPPLIED IN MK..

CABLE ASSEMBLY	FROM		TO			
	CABLE CONN.	UNIT	CABLE CONN.	UNIT CONN.	UNIT	UNIT CONN.
CX-13306/VRC (3 FT, 0 IN)	P2	Mounting base	J1	P1	Power Bendix connector	
CX-13313/VRC (2 FT, 7 IN)	P2	Mounting base	J3	P1	CX-13300/VRC (8 FT, 0 IN)	P2
CX-13300/VRC (8 FT, 0 IN)	P2	CX-13313/VRC (2 FT, 7 IN)	P1	P1	AM-1780/VRC	J501
CG-3856/VRC (4 FT, 0 IN)	P1	Antenna base	J1	P2	RF amplifier or radio	J1
CG-3856/VRC (4 FT, 0 IN)	P1	OE-254 antenna adapter	J1	P2	Stowed (on existing cable harness)	

5.7 Post-Installation and Checkout. Continued

CABLE ASSEMBLY	FROM		TO			
	CABLE CONN.	UNIT	CABLE CONN.	UNIT CONN.	UNIT	UNIT CONN.
Handset cable		Handset			Amplifier-adapter	J3
Speaker cable		LS-454/U speaker			Amplifier-adapter	J6
* CX-13303/VRC (2 FT, 6 IN)	P1	Mounting base	J2	P2	MT-6429/VRC	J1
* CX-13293/VRC (4 FT, 0 IN)	P1Radio	J5	P2 P3		TSEC/KY-57	AUD RAD

\* Not supplied in this MK.

Figure 5-8 (2). Cable Diagram: For ANIVRC-87188190 Continued



**APPENDIX A****REFERENCES**


---

AMDF	Army Master Data File (Microfiche)
AR 710-2	Supply Policy Below the Wholesale Level as Contained in Unit Supply UPDATE
AR 725-50	Requisitioning, Receipt and Issuing System in UPDATE
DA Pam 25-30	Consolidated Index of Army Publications (Microfiche)
DA Pam 710-2-1	Using Unit Supply System Manual Procedures as Contained in Unit Supply UPDATE
SB 11-131-2	Vehicular Radio Sets and Authorized Installations (SINGARS)
TM 11-5820-890-10-1	Operator's Manual (ICOM Radio Sets)
TM 11-5820890-103	Operator's Manual (Non-ICOM Radio Sets)
TM 11-5820-890-20-1	Unit Maintenance Manual (ICOM Radio Sets, Vol. 1)
TM 11-5820-890-20-2	Unit Maintenance Manual (ICOM Radio Sets, Vol. 2)
TM 11-5820-890-20-3	Unit Maintenance Manual handbook (ICOM Radio Sets)
TM 11-5820-8920-204	Unit Maintenance Manual (Non-ICOM Radio Sets)
TM 11-5820490-20P	Repair Parts and Special Tools List

**TB 11-5820-890-20-66**

By Order of the Secretary of the Army:

GORDON R. SULLIVAN  
*General, United States Army*  
*Chief of Staff*

Official:   
MILTON H. HAMILTON  
*Administrative Assistant to the*  
*Secretary of the Army*

**DISTRIBUTION:**

To be distributed in accordance with DA Form 12-36-E,  
block 9628 requirements for TB 11-5820-890-20-66.

\* GOVERNMENT PRINTING OFFICE: 1994-510-106/0018

RECOMMENDED CHANGES TO EQUIPMENT TECHNICAL PUBLICATIONS



THEN... JOT DOWN THE DOPE ABOUT IT ON THIS FORM, CAREFULLY TEAR IT OUT, FOLD IT AND DROP IT IN THE MAIL!

**SOMETHING WRONG WITH THIS PUBLICATION?**

FROM: (PRINT YOUR UNIT'S COMPLETE ADDRESS)

DATE SENT

PUBLICATION NUMBER

PUBLICATION DATE

PUBLICATION TITLE

BE EXACT... PIN-POINT WHERE IT IS

PAGE NO.

PARA-GRAPH

FIGURE NO.

TABLE NO.

IN THIS SPACE TELL WHAT IS WRONG AND WHAT SHOULD BE DONE ABOUT IT:

TEAR ALONG PERFORATED LINE

PRINTED NAME, GRADE OR TITLE, AND TELEPHONE NUMBER

SIGN HERE:

DA FORM 2028-2  
1 JUL 79

PREVIOUS EDITIONS ARE OBSOLETE.

P.S.—IF YOUR OUTFIT WANTS TO KNOW ABOUT YOUR RECOMMENDATION MAKE A CARBON COPY OF THIS AND GIVE IT TO YOUR HEADQUARTERS.

